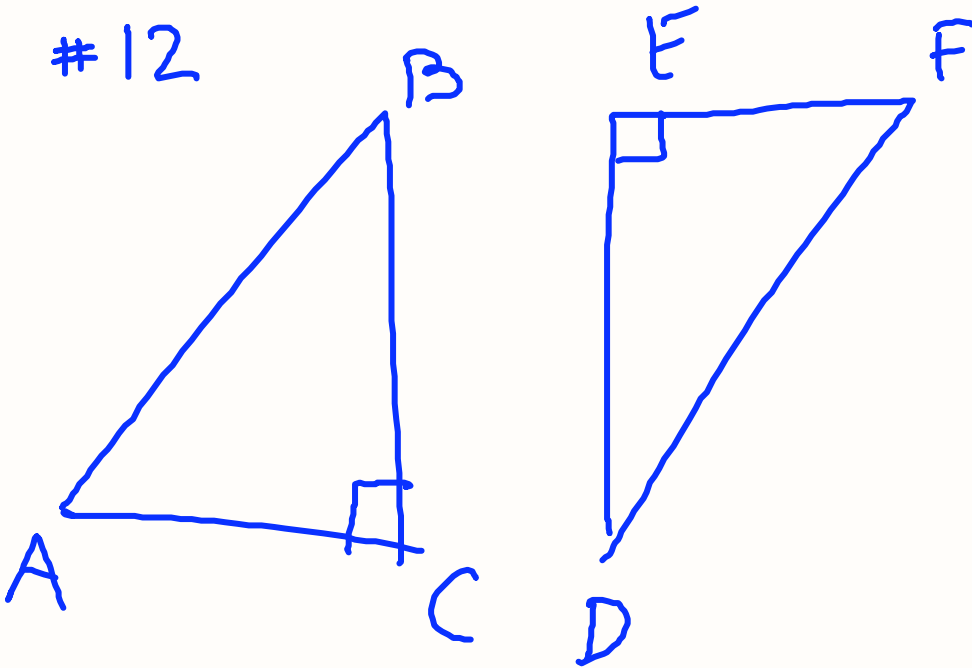


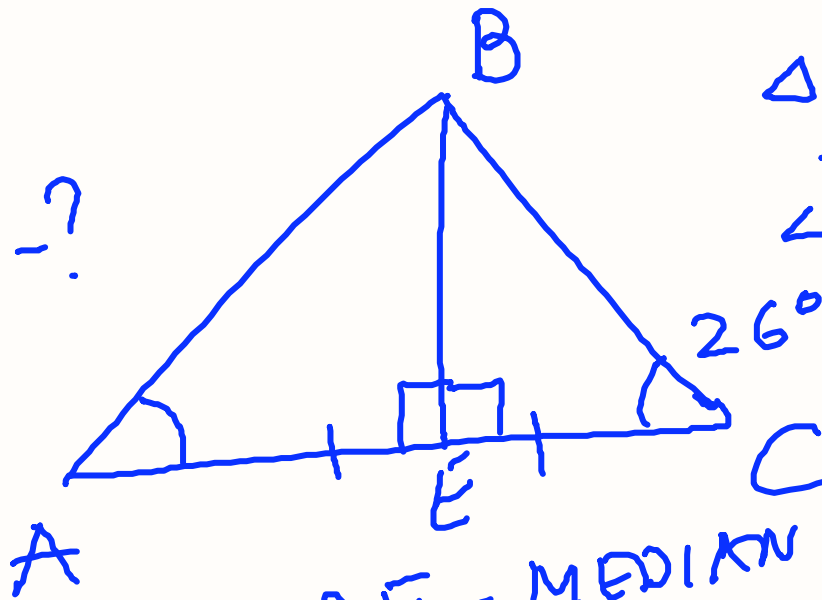
# GEDM PART 2 #12-

#12



(13)

$\angle A = ?$

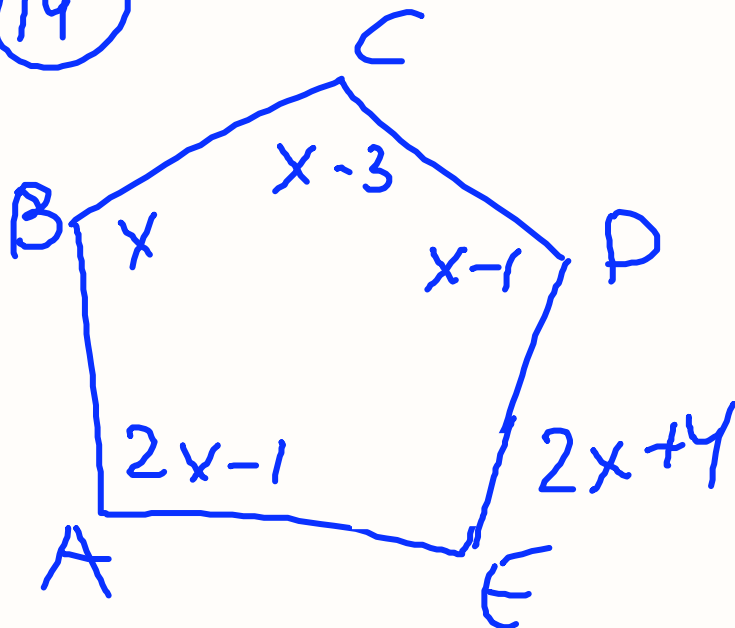


$\triangle ABC -$   
- ISOSCELES  
 $\angle A = \angle C =$   
 $26^\circ = 26^\circ$

BE - MEDIAN AND  
ALTITUDE

MEDIAN  $\overline{AE} = \overline{EC}$   
ALTITUDE :  $BE \perp AC$

(14)

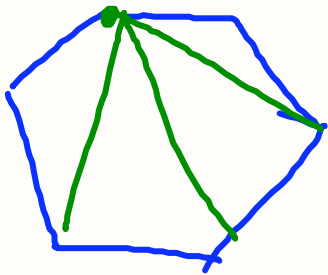


$$x + x - 3 + x - 1 + 2x + 4 + 2x - 1 = 540^\circ$$

D-?

$$\begin{aligned} 180^\circ(n-2) \\ n=5 \\ 180^\circ(5-2) &= \\ &= 180^\circ \cdot 3 = \\ &= 540^\circ \end{aligned}$$

15.



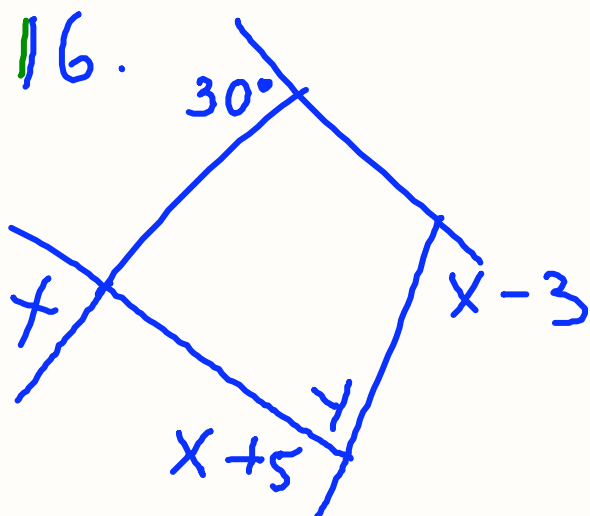
3 DIAGONALS

$$180^\circ(n-2)$$

$$180^\circ(6-2) =$$

$$= 180^\circ \cdot 4 = 720^\circ$$

16.

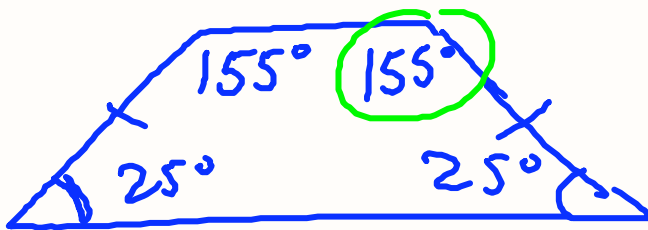


$$360^\circ$$

$$30^\circ + x - 3 + x + 5 + x = 360^\circ$$

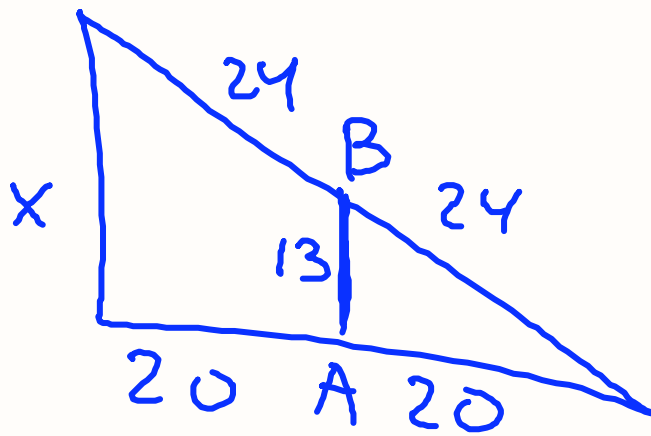
$$y = 180^\circ - (x + 5)$$

(17)



$$180^\circ - 155^\circ = 25^\circ$$

(18)



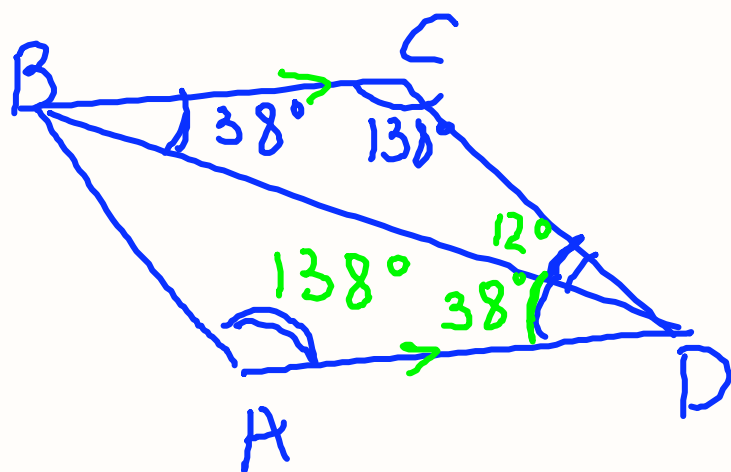
AB - MIDSEGMENT

$$x = 2AB$$

$$x = 2 \cdot 13 = 26$$

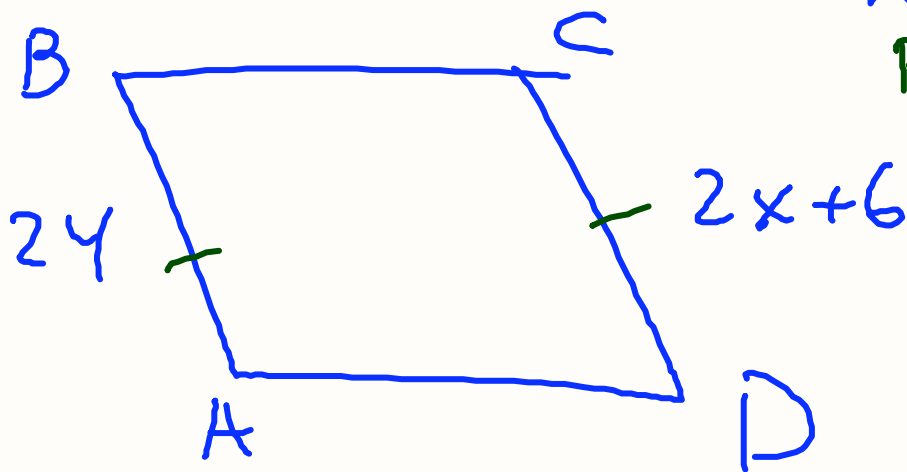
(19)

ABCD  
PARALLELOGRAM





(20)



ABCD-  
PARALLELOGRAM

$$\begin{aligned} 2x+6 &= 24 \\ -6 & -6 \\ \hline 2x &= 18 \\ \hline x &= 9 \end{aligned}$$